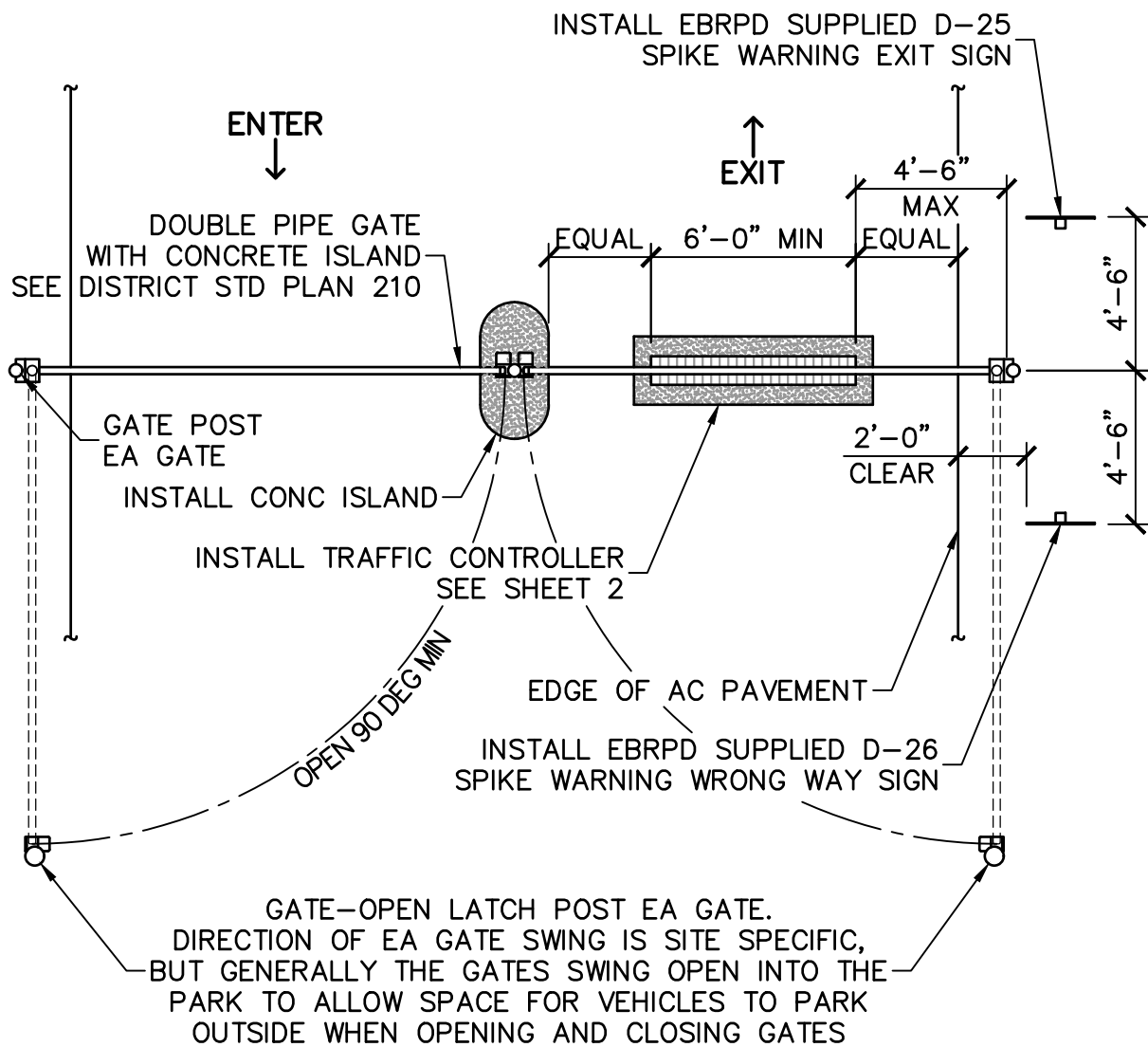


(B) ALTERNATE CONTROLLER PLAN



(A) PLAN



CONTROLLED VEHICLE ENTRY

REVIEWED BY THE PARK STANDARDS COMMITTEE, AND APPROVED BY THE CHIEF OF DESIGN & CONSTRUCTION

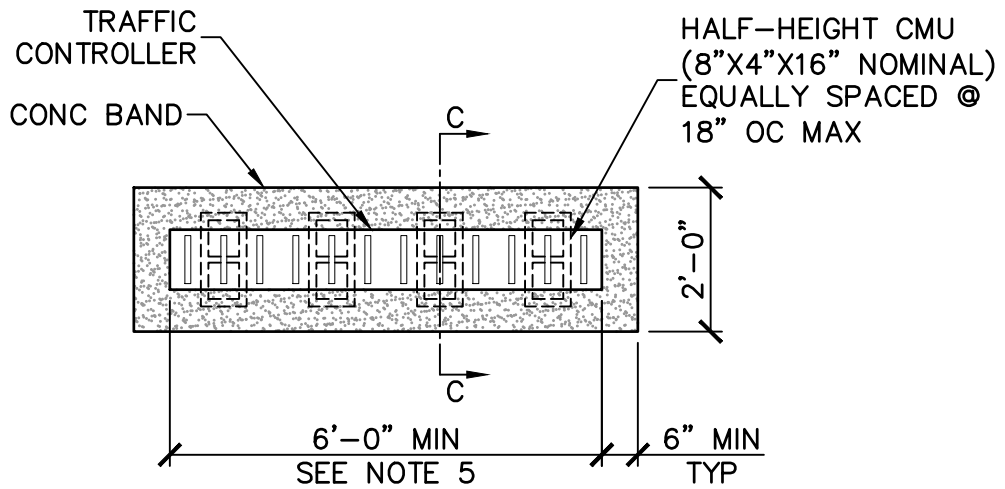
lg

10/11/2021

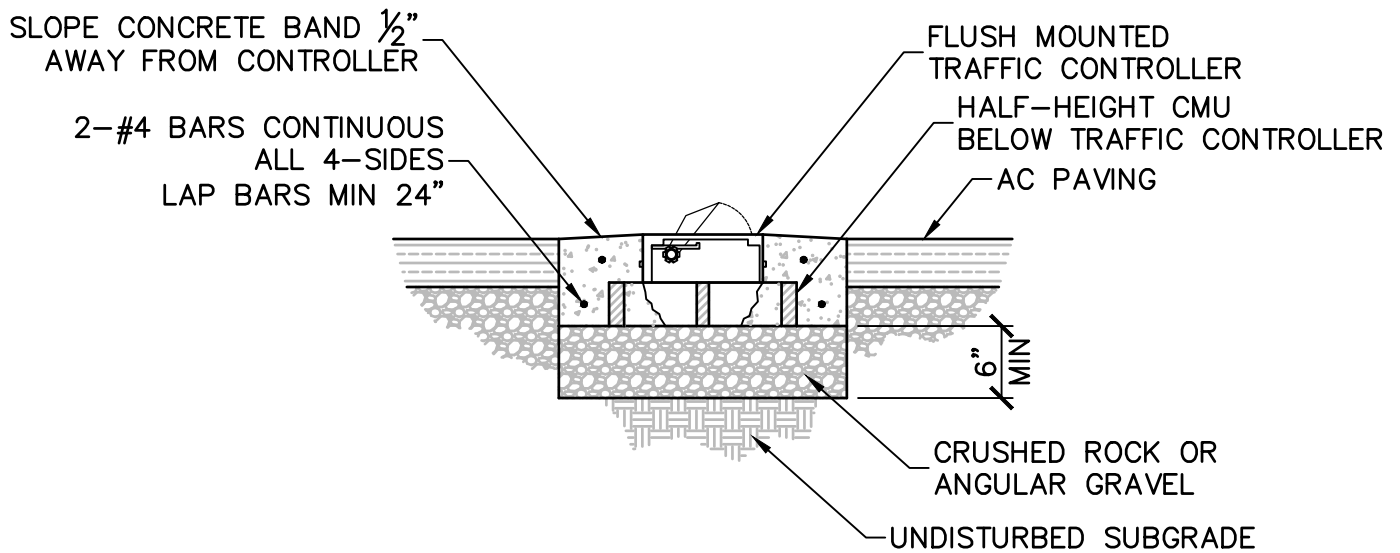
STD PLAN

410

SHEET 1 OF 3
NOT TO SCALE



(D) PLAN



(C) SECTION C-C

NOTES

1. TRAFFIC CONTROLLER TO BE SABRE TOOTH TRAFFIC CONTROLLER TC-14 WITH TC-14-LD LATCH DOWN BY DELTA SCIENTIFIC CORPORATION (DELTA SCIENTIFIC.COM) OR ROAD BLADE RB72-3 FLUSH MOUNT DIRECTIONAL TRAFFIC SPIKE CONTROLLER (SECURE-LANE.COM), OR EQUAL.
2. DIMENSIONS OF TRAFFIC CONTROLLERS VARY BETWEEN MANUFACTURERS. CONTROLLER TO BE FIELD FIT.
3. CENTER TRAFFIC CONTROLLER IN OUTBOUND LANE, UNLESS OTHERWISE NOTED.
4. CONCRETE TO BE COMMERCIAL 5-SACK PRE-MIX CONCRETE OR EQUIVALENT. APPLY MEDIUM BROOM FINISH IN THE DIRECTION OF TRAVEL.
5. ROAD LANES 13 FEET WIDE AND WIDER REQUIRE MORE THAN ONE 6-FOOT LONG TRAFFIC CONTROLLER. USE LONGER CONTROLLER OR ADD MODULAR LENGTHS BY MANUFACTURER.
6. INSTALL TRAFFIC CONTROLLERS IN AC OR CONC PAVED AREAS ONLY TO PREVENT DAMAGE FROM GRAVEL OR DIRT JAMMING TRAFFIC CONTROLLER. TRAFFIC CONTROLLER MAY BE INSTALLED IN A PAVED ROAD CONNECTED TO A GRAVEL PARKING LOT, PROVIDED THAT THE PAVED AREA CAN BE KEPT CLEAR OF TRACKED MATERIAL.



CONTROLLED VEHICLE ENTRY - TRAFFIC CONTROLLER DETAILS

REVIEWED BY THE PARK STANDARDS COMMITTEE, AND APPROVED BY THE CHIEF OF DESIGN & CONSTRUCTION

Signature

10/11/2021

STD PLAN

410

SHEET **2** OF **3**
NOT TO SCALE

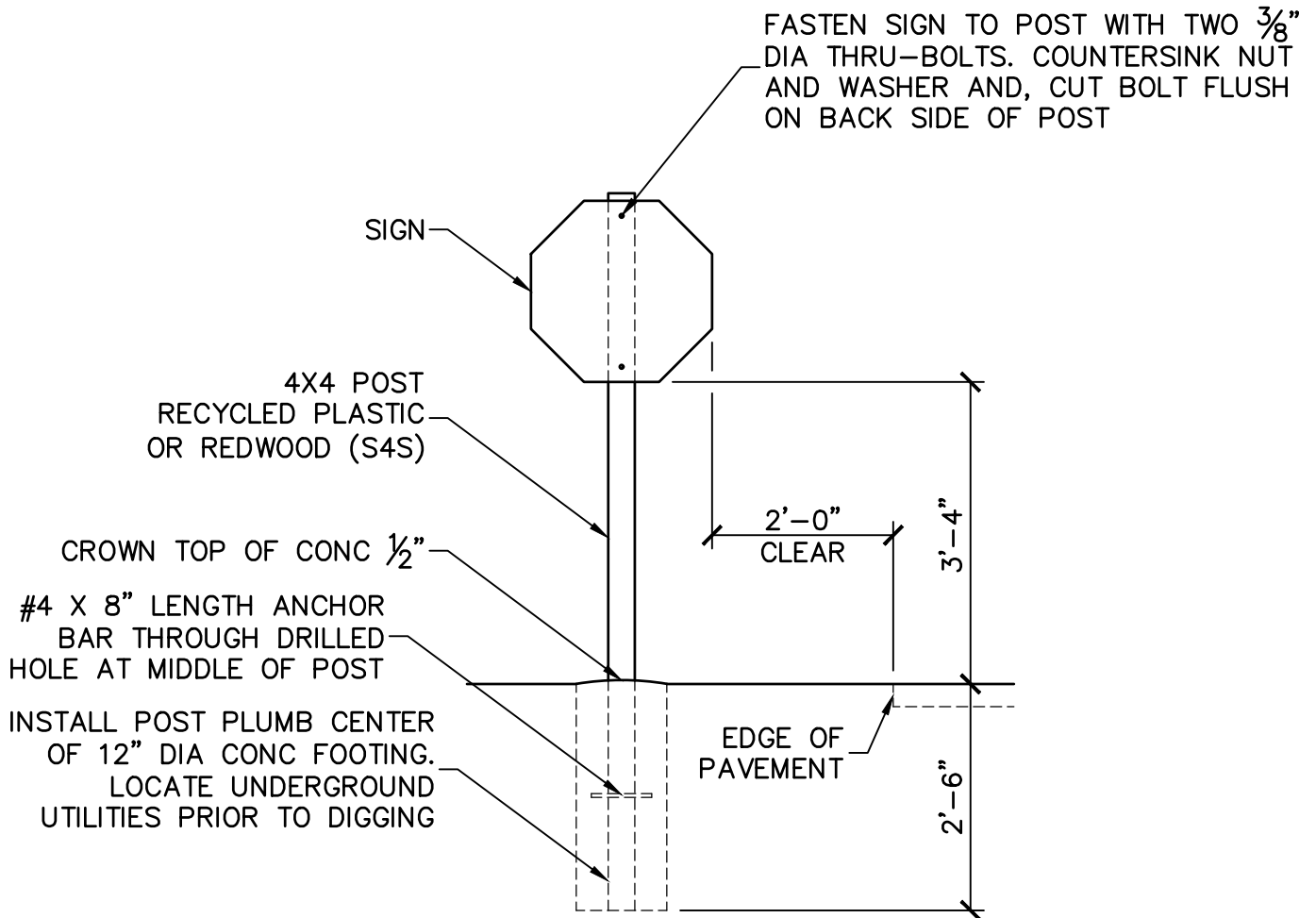


SIGN ID: D-25 SPIKE WARNING EXIT
 SIZE: 24" X 24" POLYPLATE
 COLORS: WHITE TEXT AND LINES ON RED BACKGROUND
 POLICY: USE TO DELINEATE THE ONE WAY IN-GROUND SPIKE DEVICES.
 LOCATION: INSTALL IN A HEAD-ON POSITION, NEXT TO THE SPIKE DEVICE IN THE STANDARD POSITION FOR USE ON ROADS.



SIGN ID: D-26 SPIKE WARNING WRONG WAY
 SOURCE: 24" X 24" POLYPLATE
 COLORS: WHITE TEXT AND LINES ON RED BACKGROUND
 POLICY: USE TO DELINEATE THE ONE WAY IN-GROUND SPIKE DEVICES.
 LOCATION: INSTALL IN A HEAD-ON POSITION, NEXT TO THE SPIKE DEVICE IN THE STANDARD POSITION FOR USE ON ROADS.

(F) SIGN DESCRIPTIONS



(E) SIGN INSTALLATION ELEVATION



CONTROLLED VEHICLE ENTRY - SIGNS

REVIEWED BY THE PARK STANDARDS COMMITTEE, AND APPROVED BY THE CHIEF OF DESIGN & CONSTRUCTION

Signature

10/11/2021

STD PLAN

410

SHEET 3 OF 3
 NOT TO SCALE