

East Bay Fire History

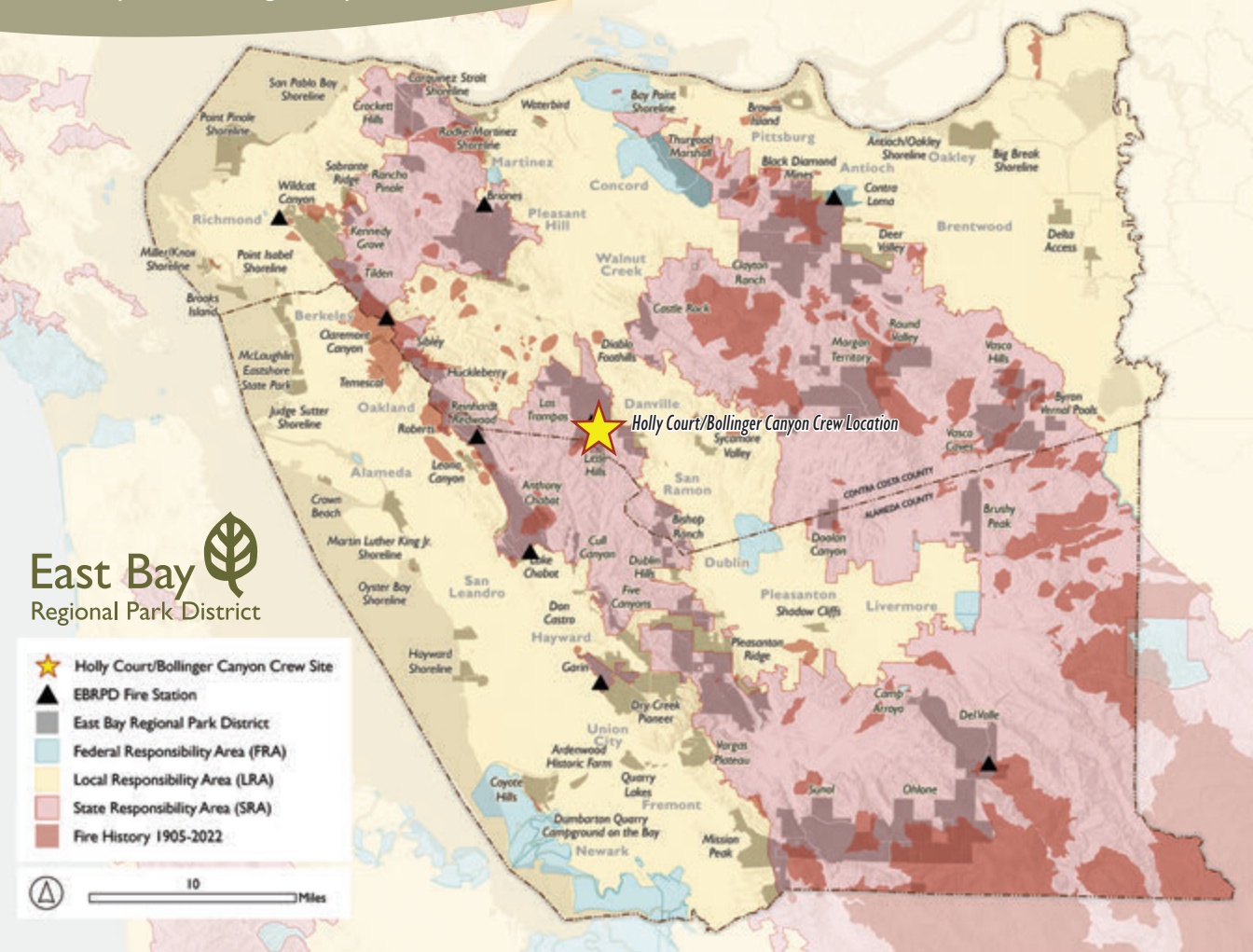
and Holly Court/Bollinger Canyon Crew Location



Support for Service Corps
and Green Jobs

WORKFORCE DEVELOPMENT

2950 Peralta Oaks Court, Oakland, CA 94605
1-888-EBPARKS or 1-888-327-2757 (TRS 711)
ebparks.org



Conservation Corps participants are introduced to environmental education in Ardenwood Historic Farm, Fremont



The Future of Green Jobs: Corps Facilities in the East Bay

The Park District and California Conservation Corps (CCC) are working together to establish permanent Corps facilities in the East Bay. Park District staff have been in discussions with CCC about locating a Corps crew on Park District land at Las Trampas Wilderness Regional Preserve near San Ramon. Should the site be improved, it will provide infrastructure improvements at Holly Court/

Bollinger Canyon to host two CCC crews safely and healthfully. Approximately \$25 to \$30 million is needed for these permanent facilities.



CCC workers build a butterfly garden at Oyster Bay Regional Shoreline, San Leandro

Government and Legislative Affairs
T: 510-544-2036
GovAffairs@ebparks.org
@EBRPDGovAffairs

On the Cover: Corps members play a key role in protecting Bay Area communities

© 2024 East Bay Regional Park District 2024/01/24

Soy Ink Bug goes here



Service Corps Members Play a Key Role in Protecting Bay Area Communities

To support career pathways in the parks, recreation, outdoor and environmental fields for all, the East Bay Regional Park District actively supports the development of well-trained, dedicated, and valuable employees. The Park District participates in partnership with public agencies, non-profit organizations, volunteers, and the private sector to achieve a wide range of mutual career-based goals.

Mutual Career-Based Goals

- Investing in local and regional economy by supporting jobs through project implementation while demonstrating the economic benefits of parks and trails.
- Guiding funding investments for Service Corps, entry-level jobs and training programs.
- Continuing and expanding equitable job opportunities for youth in the East Bay.

East Bay Regional Park District youth job fair



Economic Benefits of Parks to Our Community

Nature-based infrastructure projects require multiple sources to fund in full and often cost millions. Acknowledging the increasingly significant level of public investment, the Park District strives to understand the full community and region-wide benefits of park infrastructure projects with scientific analysis. A Beacon Economics study found these projects not only support the community, but also directly contribute to the local economy and bolster jobs beyond park staff.

Community and elected official support help ensure bonds, grants, and taxes are advanced to fund the completion of projects. ***It is a cycle of support, funding, project delivery, and positive user experience which continues to bind the East Bay regional park district now and for years to come.***

The Park District's Intern Program supports students seeking vocational training or pursuing a park ranger career

Youth, Career Ladders, and Regional Workforce Development

Expanding national and state service opportunities through AmeriCorps, California Conservation Corps, Civicorps, Student Conservation Association, and other programs can provide jobs for East Bay youth serving a variety of important functions – Fuels Crew member positions, park rangers, naturalists, fire fighters and more!

The Park District has increased investment in workforce development programs aimed at prompting a more robust effort and larger impact in supporting local youth, including at-risk or underserved individuals. Building up programming in job training and development supports critical District efforts to reduce wildfire risk, as well as maintain safe and enjoyable trails for our many park visitors.

The Park District has long benefited from the work of Conservation Corps. From 1933 to 1942, Civilian Conservation Corps (CCC) and Works Progress Administration (WPA) workers built original Park District infrastructure. Much of this infrastructure still stands and is enjoyed by visitors daily.



Bay Area youth find career opportunities in the East Bay Regional Park District



Regional Parks year-round Fuels Crew

Wildfire Resilience through Green Jobs

The work of Fuels Crew members assists in addressing the challenge of managing large urban forests safely to mitigate catastrophic wildfire. Proactive vegetation management is critical for protecting urban communities.

The Park District proudly supports a year-round Fuels Crew. East Bay Conservation Corps members would qualify for permanent crew positions as they become available and would be encouraged to apply.



Fuels Crew work on fire suppression