

Wildlife at Alameda Point

The waters of San Francisco Bay surrounding the island of Alameda support a rich diversity of life. The rocky shoreline of Alameda Point provides a surface where many different kinds of plants and animals attach themselves. Barnacles and mussels “filter feed,” then close their shells when exposed to the air during low tides. Crabs scavenge, and many species of fish feed amongst the rocks and in deeper waters. Migrating and wintering shorebirds and waterfowl come to the area by the thousands.

From mid-spring to late summer, watch for two endangered species. Up to 3,000 California brown pelicans roost at night on “Breakwater Island,” less than one mile west of here. About two miles to the northwest, a large colony of California least terns nests on the Alameda Naval Air Station. Look for these endangered acrobats plunging head first into the water as they hunt for fish.

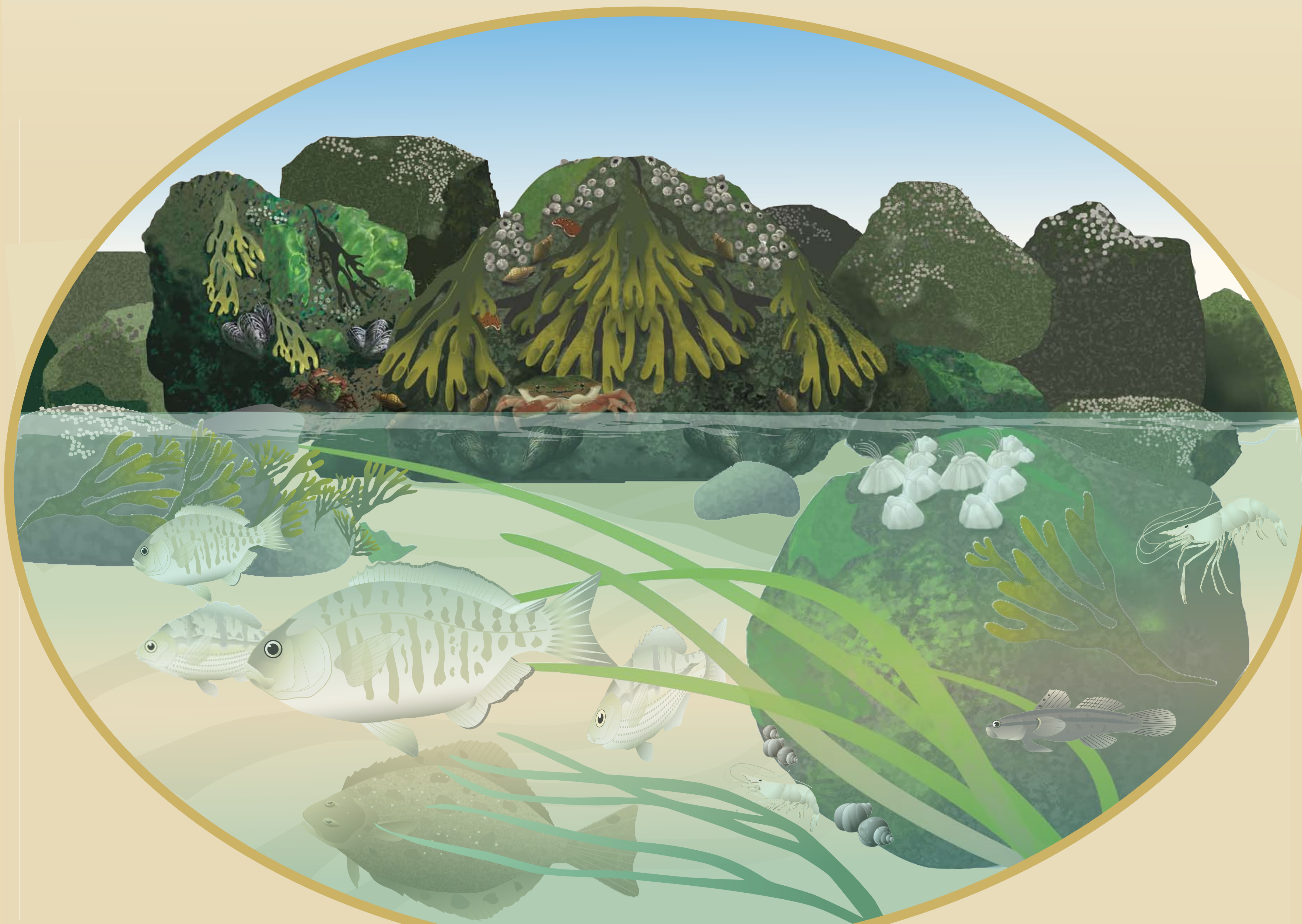


California least tern
Yellow beak with black tip, black wing edge, and white “V” on the forehead. The smallest tern.

Watch for the endangered California least tern as it hovers in the air before plunging into the water with its sharp bill to catch small fish. If you see the tern flying to the northwest after a successful hunt, it might be bringing its catch to nearby nesting grounds (May-August).

East Bay 
Regional Park District
www.ebparks.org

Illustration by Doyle Wegner



Come to the Crab Cove Visitor Center at Crown Beach to learn more.



California brown pelicans glide above the water with their seven foot wingspan, searching below with keen eyesight for fish to eat. When they plunge into the water beak-first during a hunt, the air sacs beneath their skin protect them like shock absorbers and also help them return to the surface.

Exhibit Design 1/09