

Where in the Watershed are You?



coast live oak

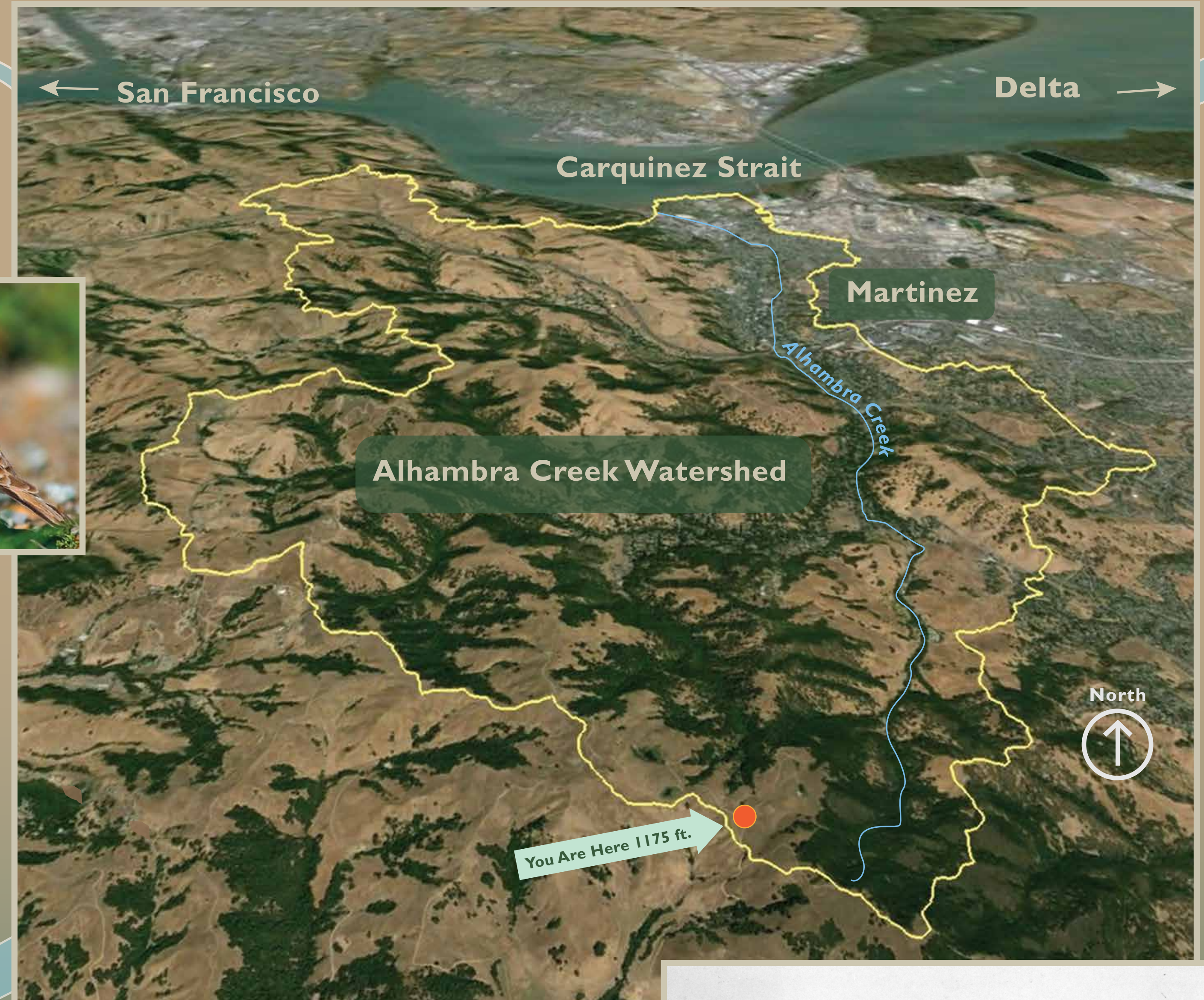
Doyle Wegner

You are facing north along the southern edge of the 16.5 square mile Alhambra Creek Watershed. The water, 6 miles away, is the Carquinez Strait, part of the northern reach of the San Francisco Bay. It is where Alhambra Creek and its tributaries drain.

horned lark



Jerry Ting



Google Earth Map

Walker's darner



Doyle Wegner

The water does not simply start here and end there. It carves and melts the sandstone canyons and hills. It quenches the mountain lion, the lark and the oak. It conveys nutrient-rich sediments to the lowlands where abundant fruit and nut orchards once thrived.

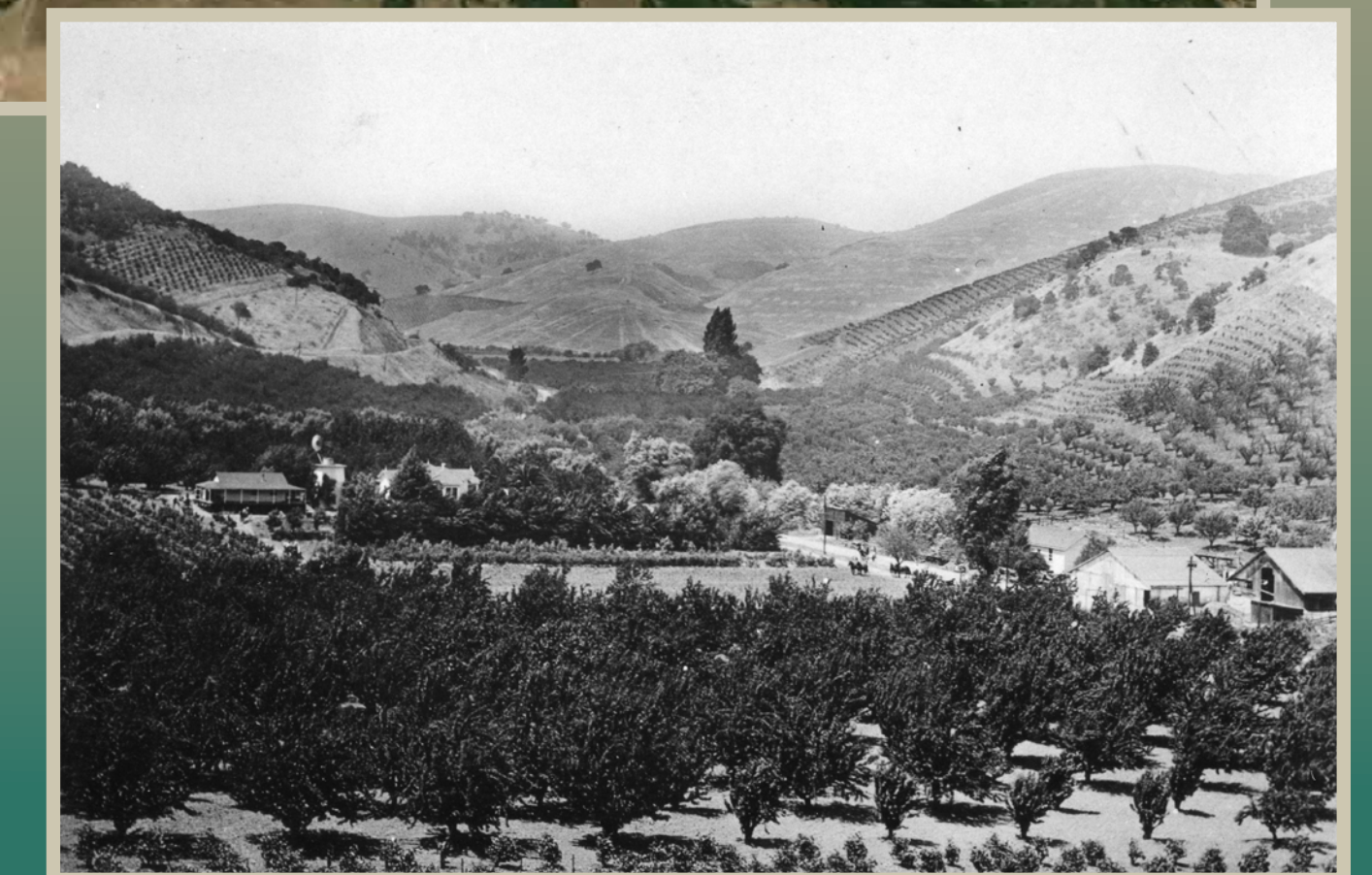
Our watersheds connect the hills to the Bay, the plants to the animals, and all of us who live, work and play here to everything else. Every one of us lives in a watershed.

Do you know which one you live in?



mountain lion and bobcat

Barbara Downs



Contra Costa County Historical Society

Alhambra Valley orchards, 1900

East Bay
Regional Park District
www.ebparks.org

